



Next Steps: Pilot and a programme approach

Katie Spooner
Head of Water
Business in the Community

Next Steps: A pilot to a programme approach

Programme Implementation

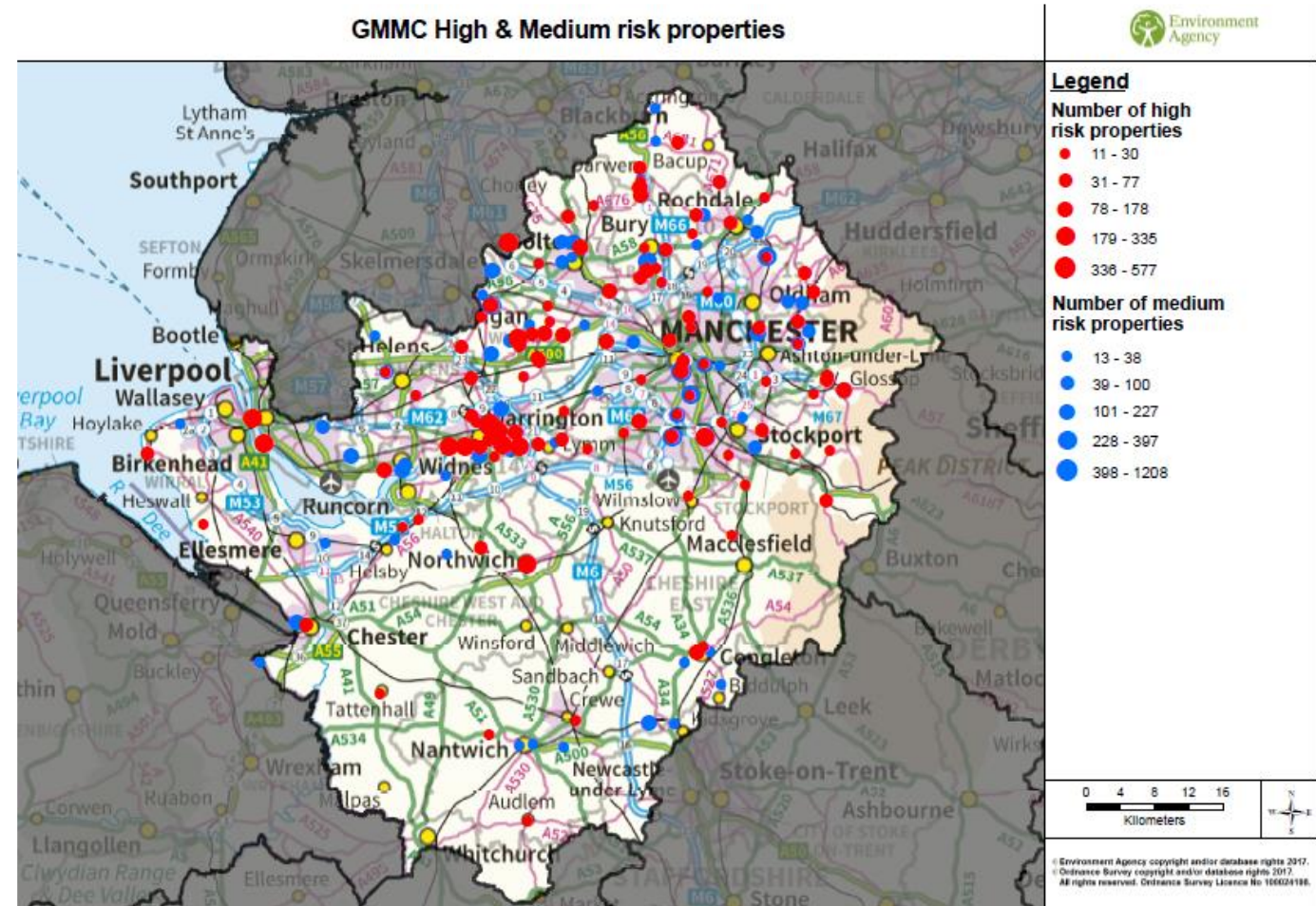
- SuDS represents good value for money with ongoing returns
- Requires programme level investment to benefit fully from financial and multiple benefits
- A collaborative approach is required
- Build on existing models of innovative financing including SALIX or green/social bonds
- Leverage existing collaboration from the Urban Pioneer



Next Steps: A pilot to a programme approach

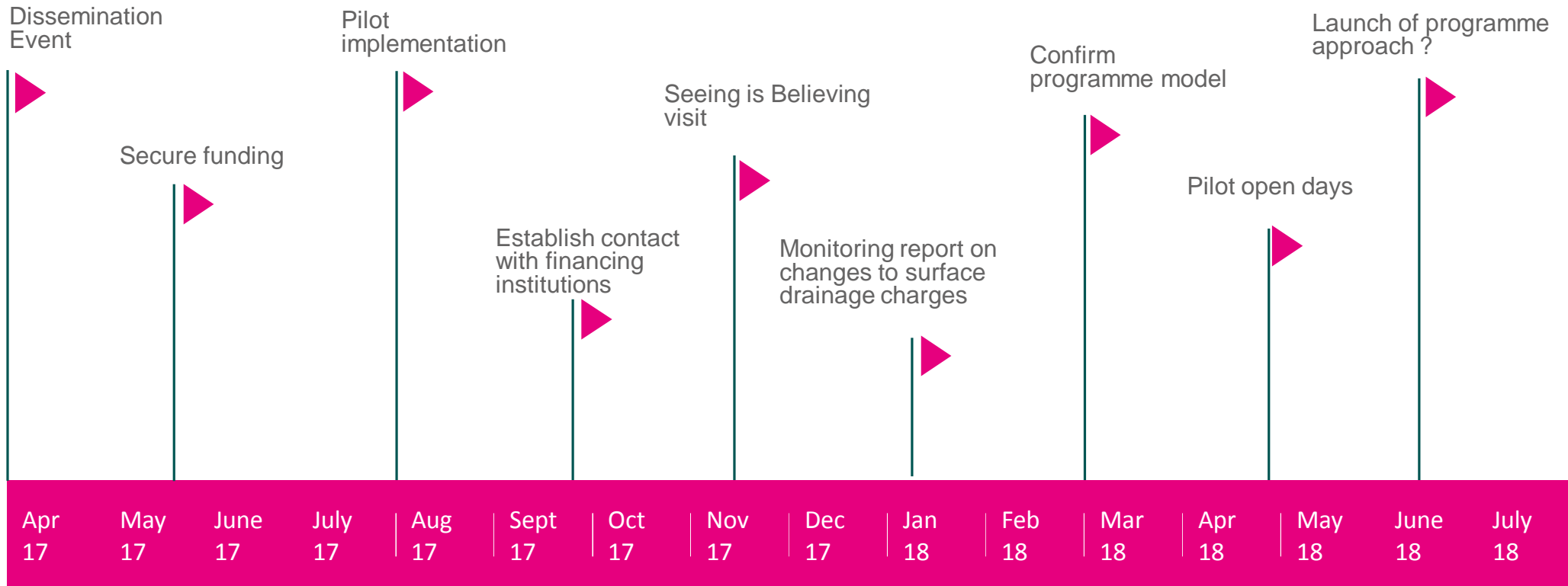
Pilot demonstration models:

- Looking for three sites:
 - School site
 - NHS site
 - Business site
- Commitment from demonstration sites to be a demonstration site for Greater Manchester and the North West.
- Priority given to sites in high flood risk areas



Next Steps: A pilot to a programme approach

Timeline





Business in the Community

137 Shepherdess Walk London N1 7RQ | T: +44 (0)20 7566 8650 | www.bitc.org.uk | @BITC

President HRH The Prince of Wales | Chairman Antony Jenkins | Chief Executive Amanda Mackenzie OBE

Business in the Community is a registered charity in England and Wales (297716) and Scotland (SC046226). Company limited by guarantee No 1619253.