



# Building Regulations Part L 2010 Case studies

Presented by David Kingstone

Buro Happold **Environment**

Traditional Buildings Conference, 30 March 2011

[david.kingstone@burohappold.com](mailto:david.kingstone@burohappold.com)



Delivered by



# Part L 2010 case studies

- Dwelling refurbishment
- Listed Building refurbishment and extension
- Summary



Buro Happold the engineering of excellence



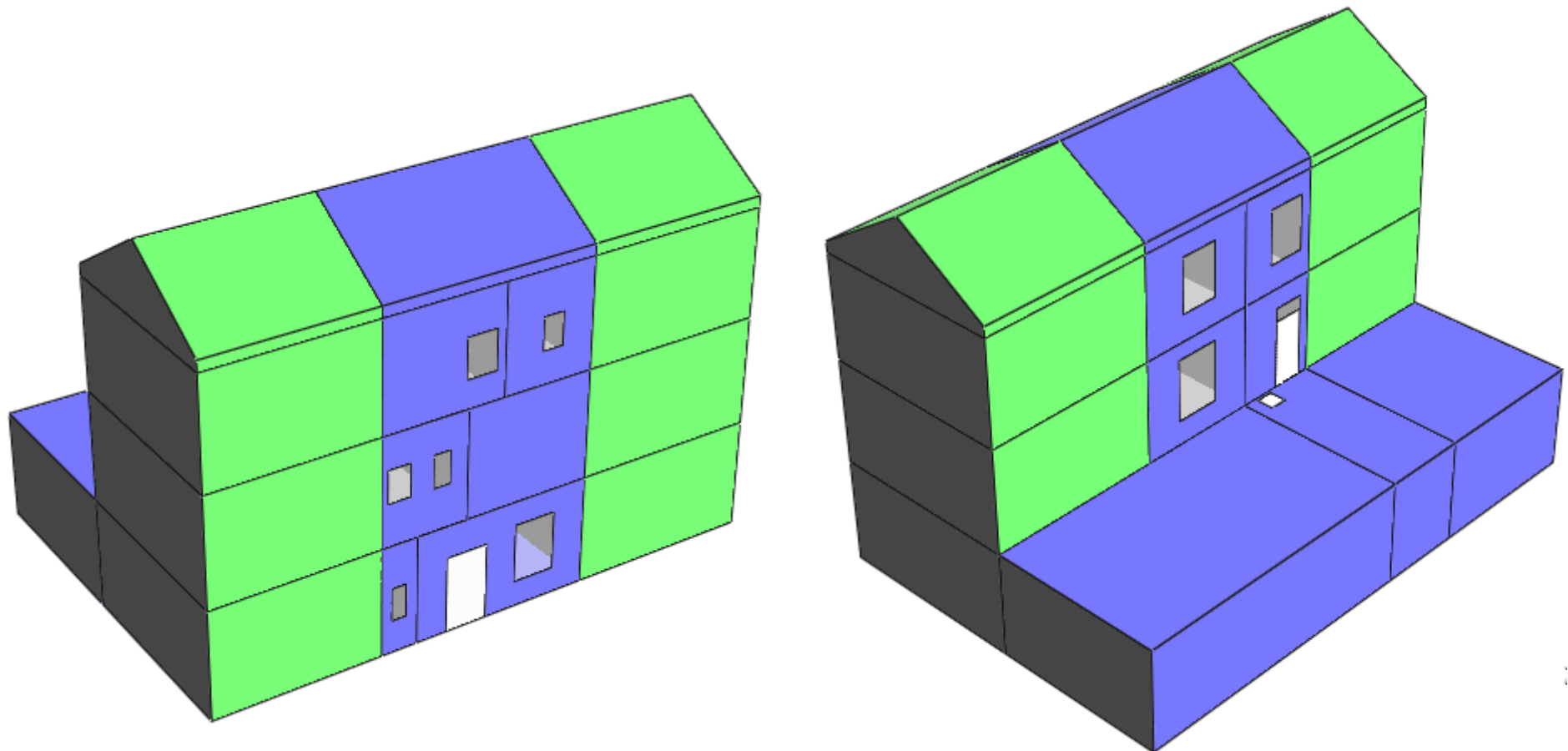
**CLASP.**

Delivered by



**CPTS**  
Cumbria Planning  
Training Service

# Case Study – Refurbished dwelling



Buro Happold the engineering of excellence



**CLASP.**

Delivered by





# Case Study – Refurbished Dwelling

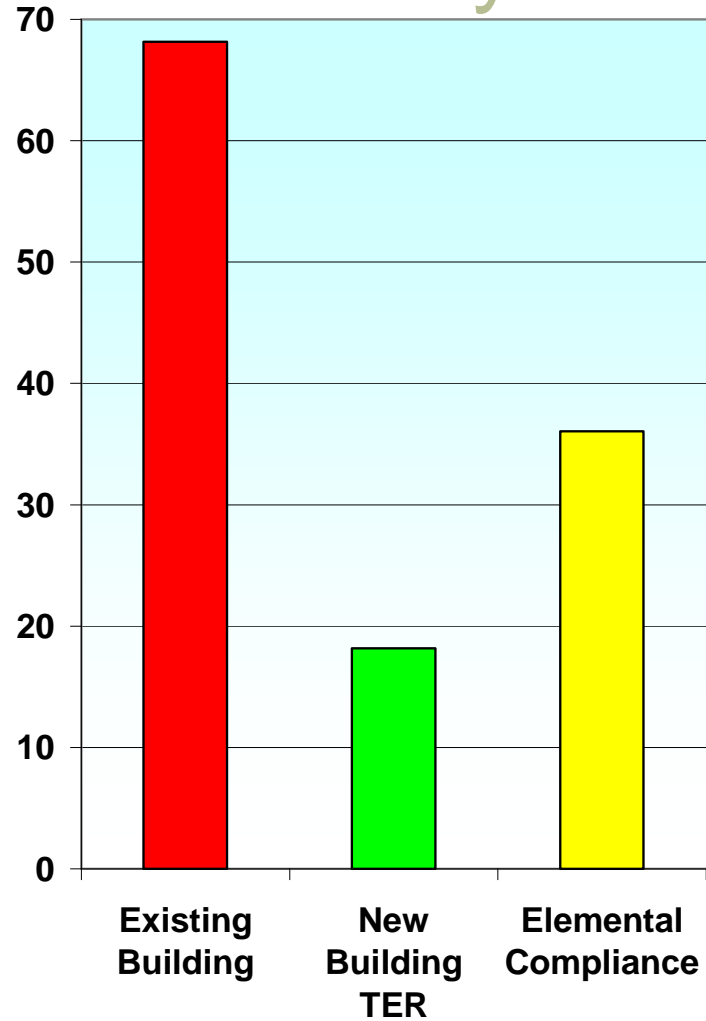
## Existing Dwelling:

- Uninsulated stone built mid terrace
- Gas fires to two rooms
- Electric DHW storage

## Proposals

- Install central heating via condensing combi boiler
- External wall insulation is not an option

# Case Study - Dwelling



Buro Happold the engineering of excellence

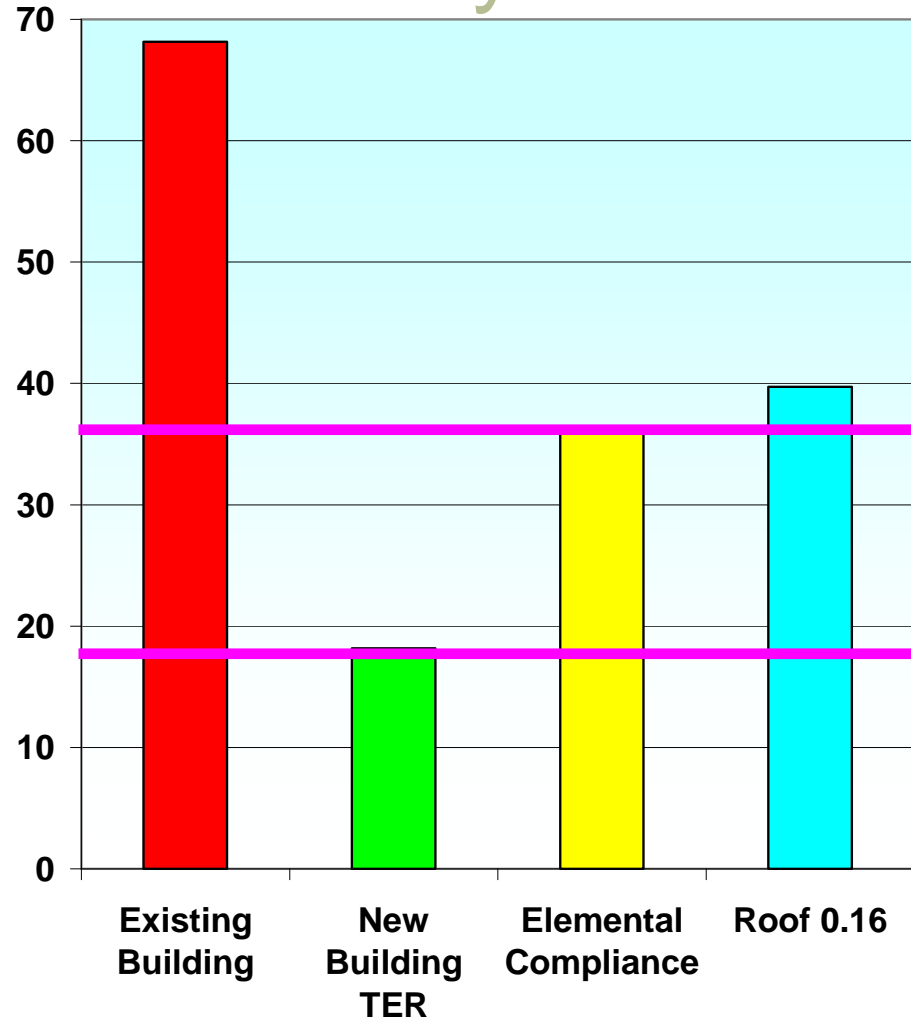


**CLASP.**

Delivered by



# Case Study - Dwelling



Buro Happold the engineering of excellence

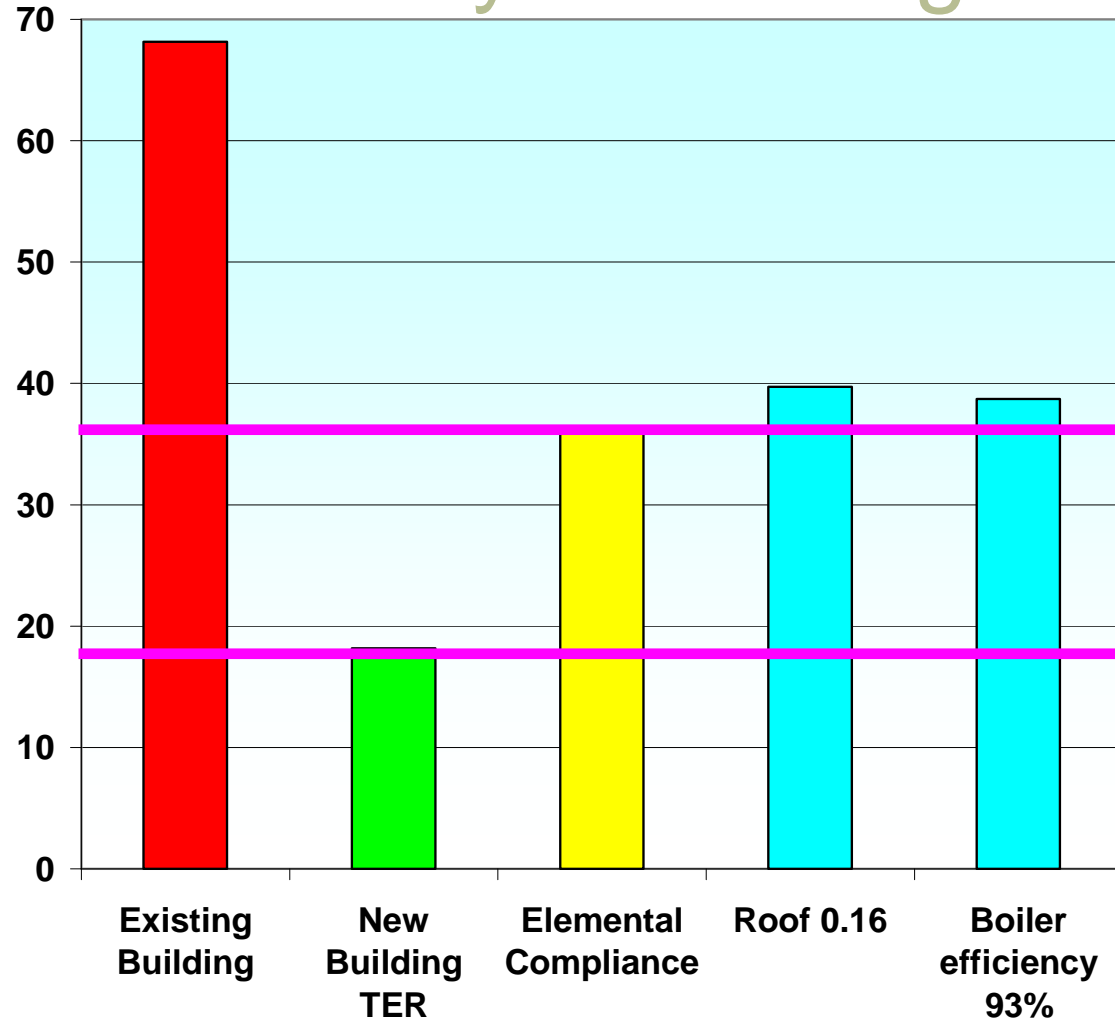


**CLASP.**

Delivered by



# Case Study - Dwelling



Buro Happold the engineering of excellence

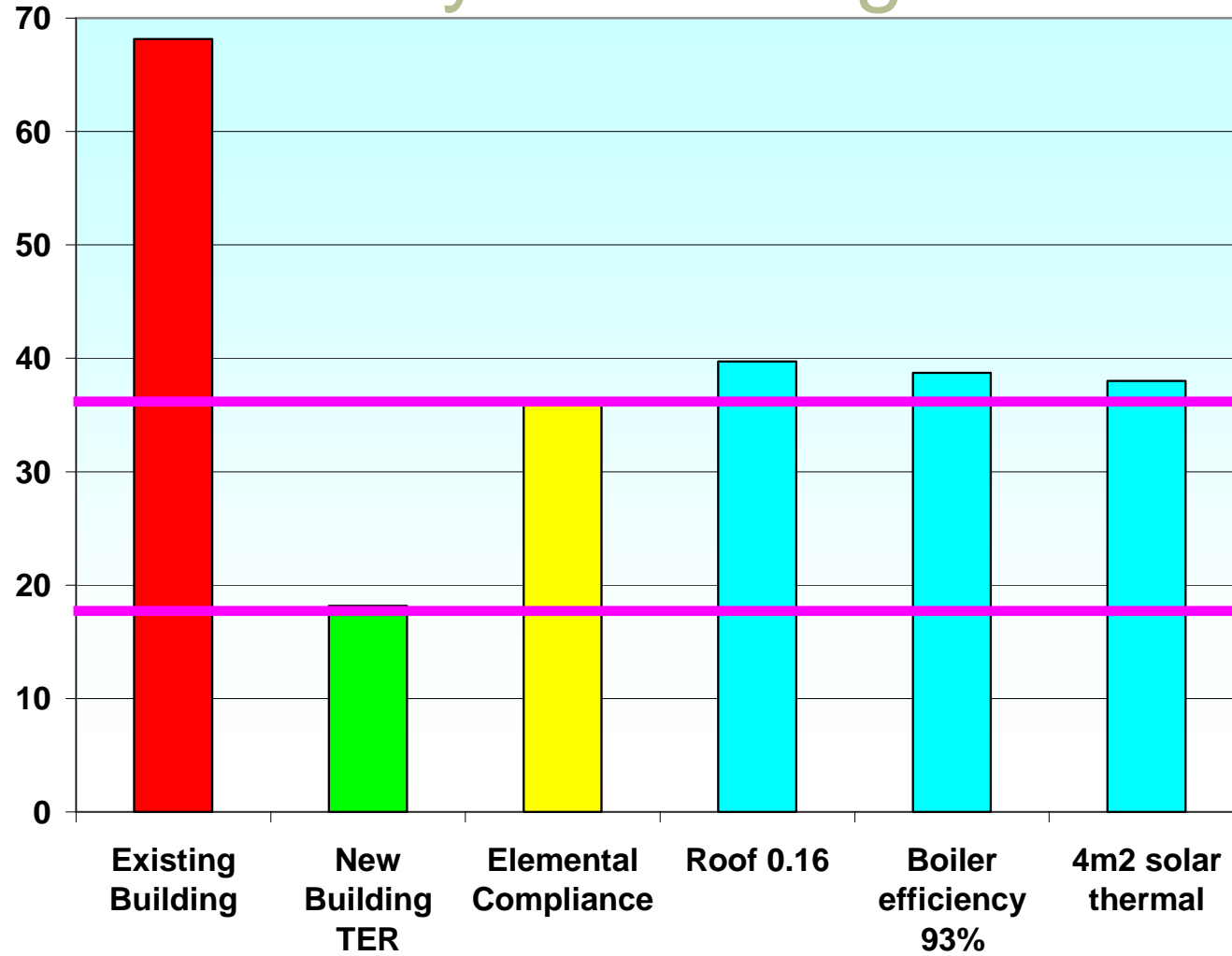


**CLASP.**

Delivered by



# Case Study - Dwelling



Buro Happold the engineering of excellence



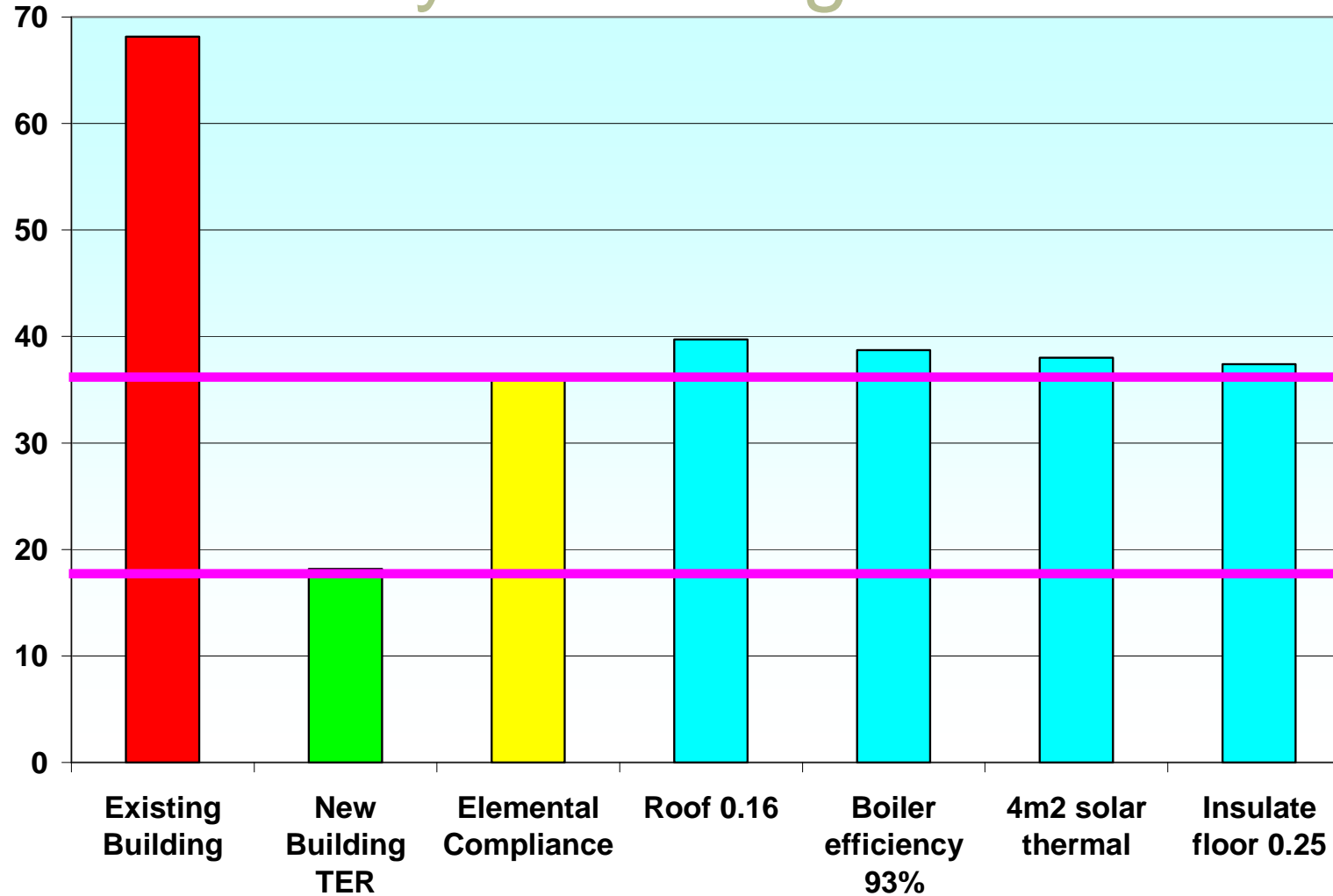
**CLASP.**

Delivered by





# Case Study - Dwelling



Buro Happold the engineering of excellence

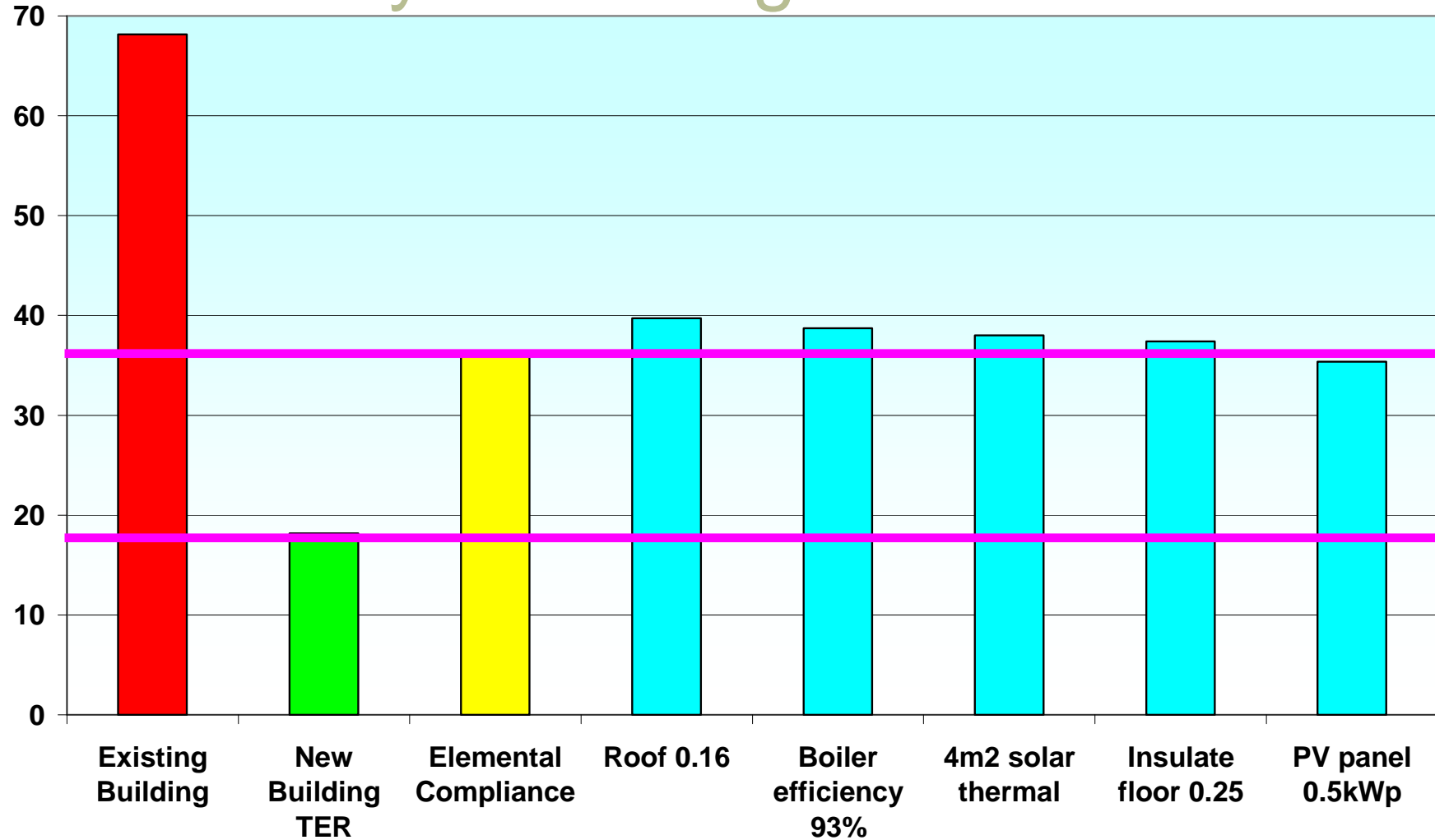


**CLASP.**

Delivered by



# Case Study - Dwelling



Buro Happold the engineering of excellence



**CLASP.**

Delivered by



**CPTS**  
Cumbria Planning  
Training Service

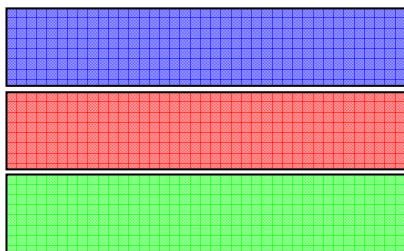
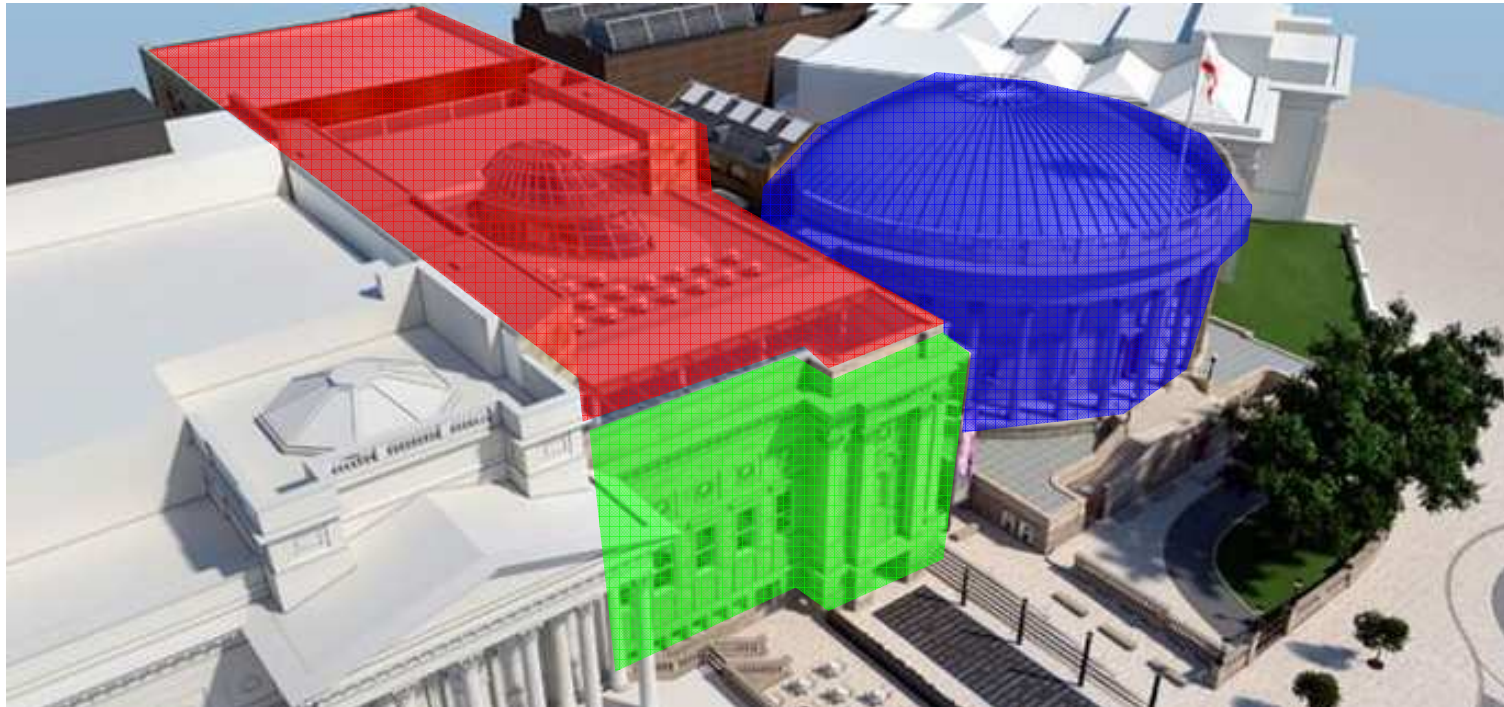
# Part L 2010 case studies

- Dwelling refurbishment
- Listed Building refurbishment and extension
- Summary





# Case Study – listed building



## Part L compliance requirements

- Change of energy status (CI)
- Extension (CI)
- Material alteration

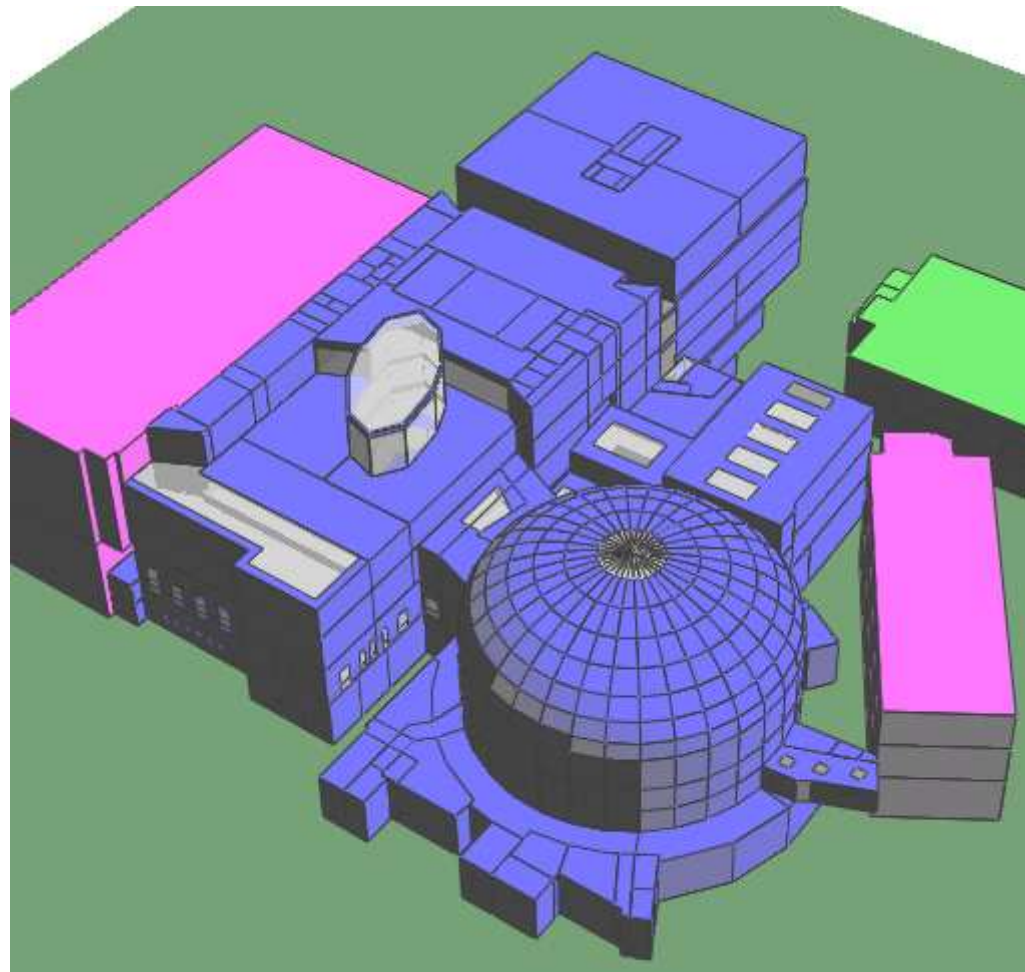
# Case study – listed building

## Extension

- Comply with Part L 2010 new build

## Existing Building

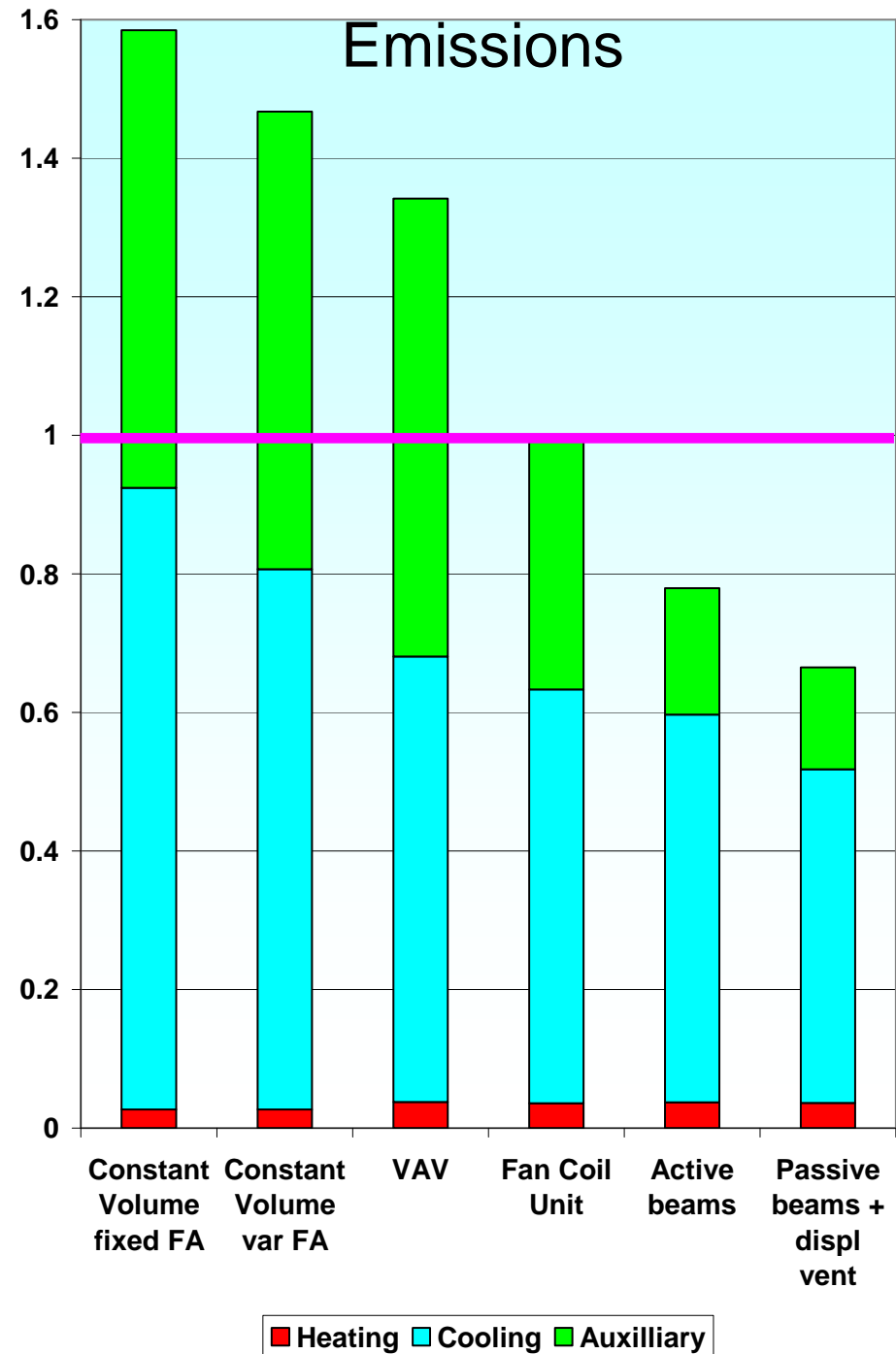
- Limited fabric improvements possible
- Some cooling added
- Original lighting



# Case study

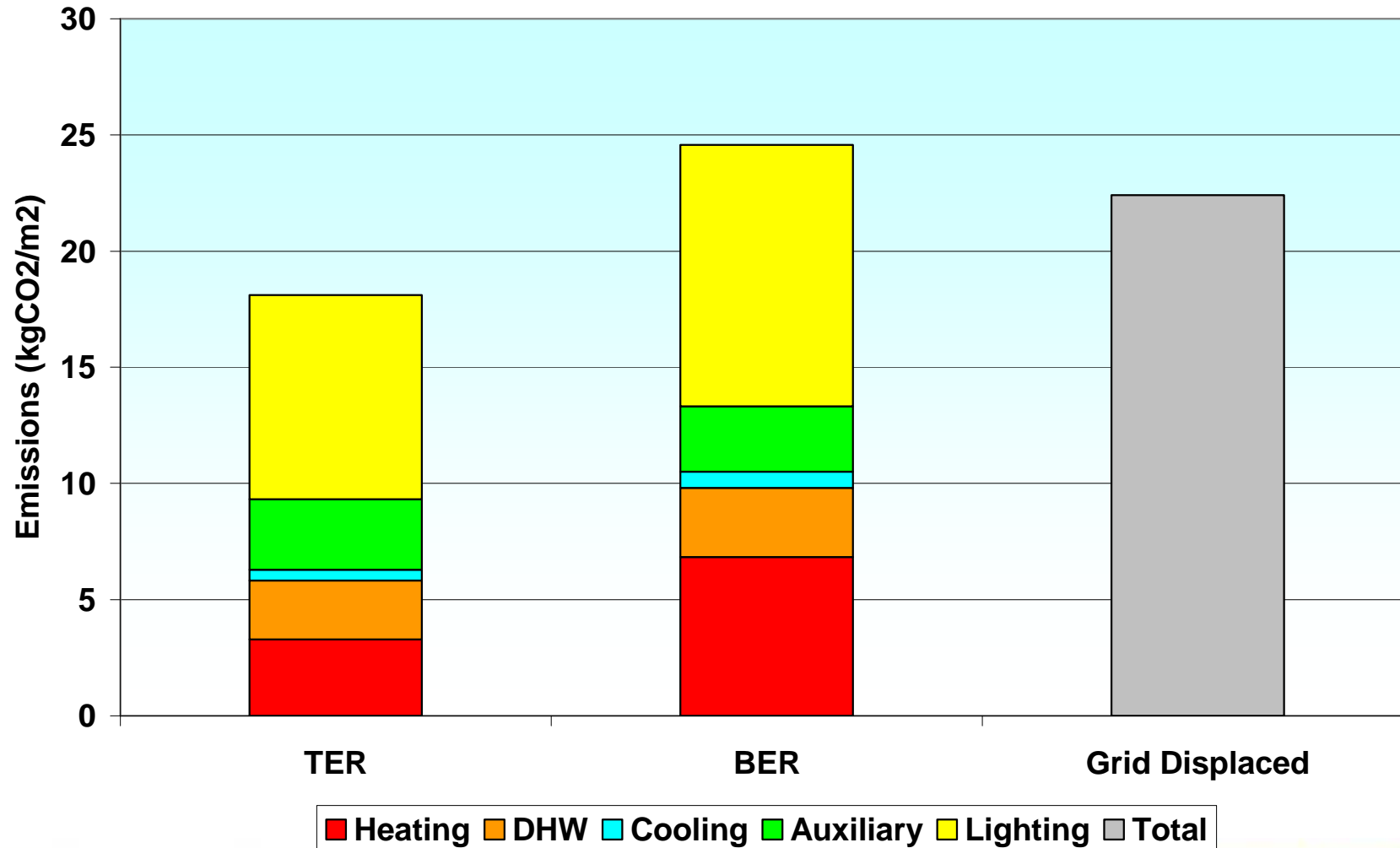
Notional Building = TER

- Building fabric U-values
- Systems efficiency
- Ancillary energy
- Lighting
- Emission factors

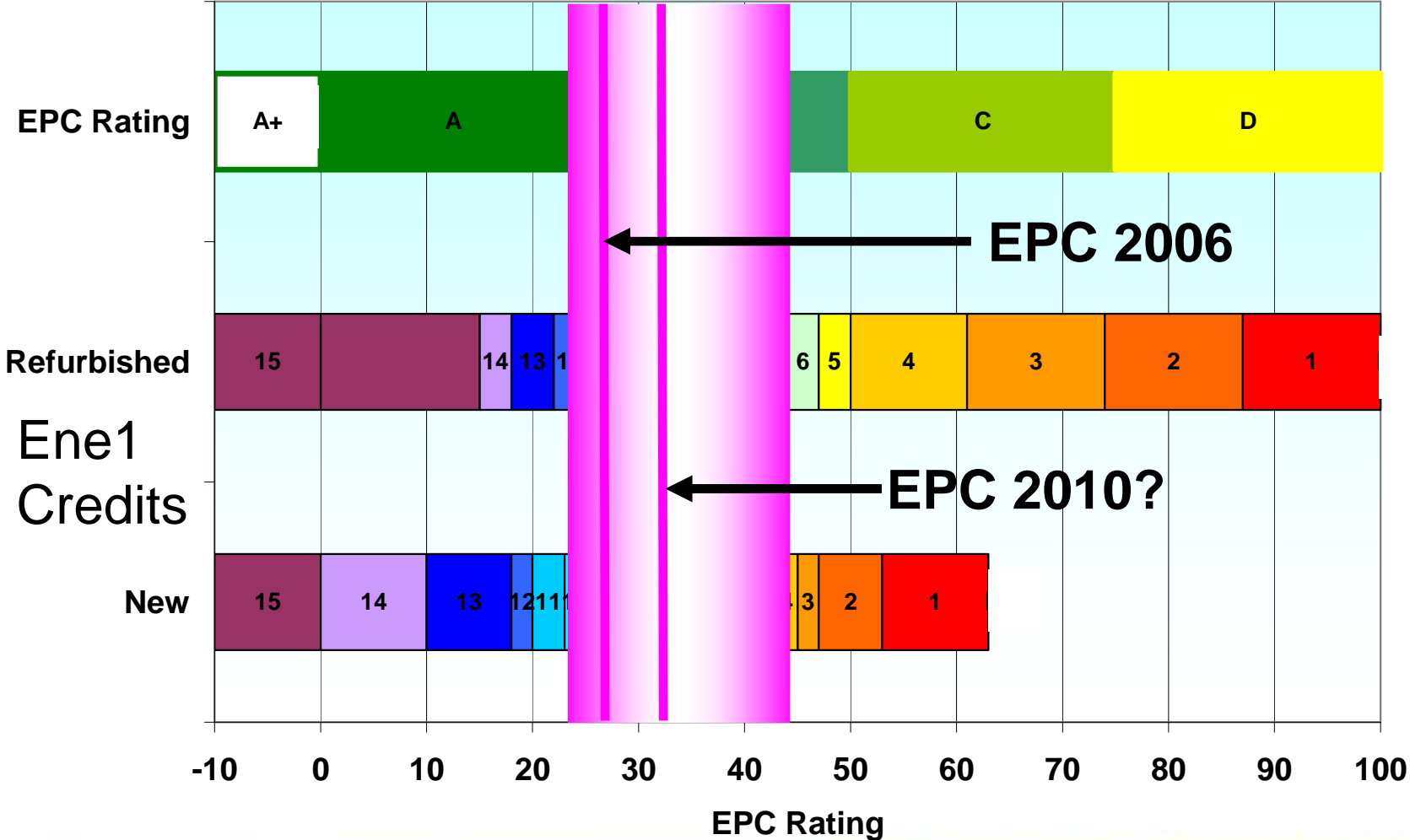




# Case study – listed building



# EPC and Breeam Ene1 credits



# The new emissions regulations

- Dwelling refurbishment
- Listed building refurbishment and extension
- Summary



Buro Happold the engineering of excellence



**CLASP.**

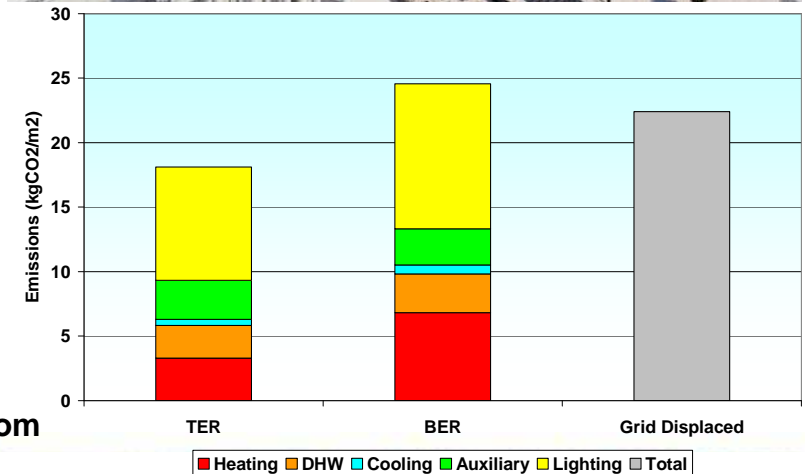
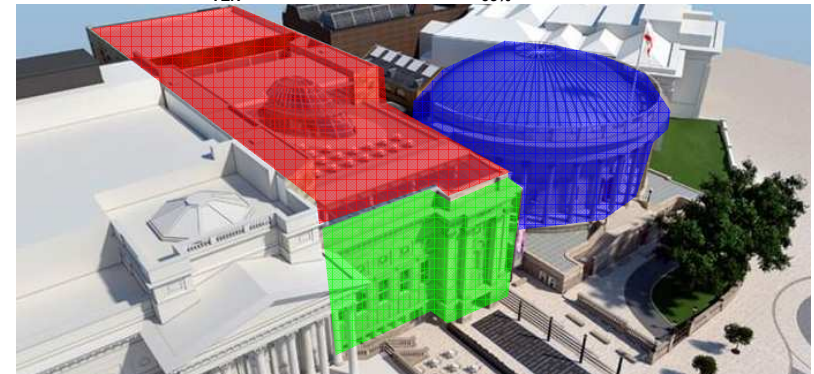
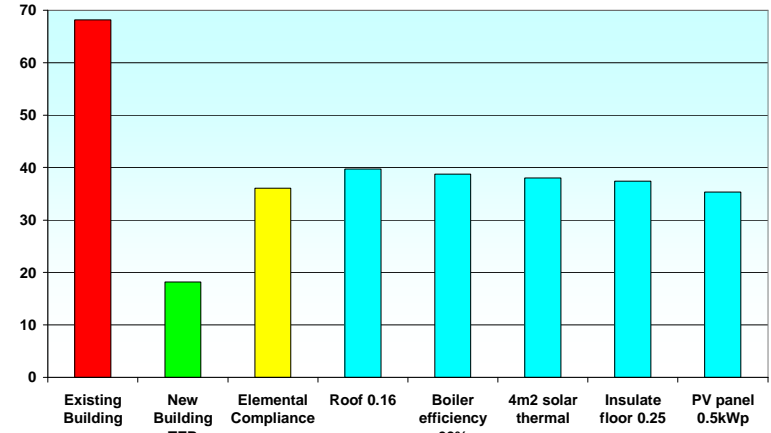
Delivered by



**CPTS**  
Cumbria Planning  
Training Service

# Summary

- The process is not simple
- Compliance strategy must be thought out
- Consider energy efficiency and value



david.kingstone@burohappold.com