

Cllr. Tim Moore

Cabinet Member for the Environment and
Climate Change

Liverpool City Council



Key Issues

- Context and Perception for Elected Members
- Challenges/Opportunities
- Mainstreaming Climate Change as Core Business
- Leadership and Partnership
- The Liverpool Approach



Context, Perception and Challenges

- Major Financial Challenges – Climate Change Agenda
- Major Financial Challenges – “Traditional” Services
- Perception that low carbon not core business
- Concerning political/public narrative about reductive approach to role of Councils
- Ward Member Engagement – ‘legitimacy’ lies in linking to priorities whilst delivering basics (1000 Grotspots Pledge)



The Opportunities

- Low ecological footprint
- Redefine image of an area
- Community engagement and Leadership (First Among Equals)
- Partners resources (CLASP, TMP)
- Rising energy costs – Invest to Save
- Grow Economy
- LGA – DECC MoU
- Drive Service Improvements
- The Bigger Picture





John Leiv





Mainstreaming as Council Business

- Cabinet Member for Environment and Climate Change
- Energy Management within Council
- Public Protection – core business
- Severe Weather Resilience – Floods/Snow
- Community Engagement Events – engage and involve Elected Members (Community Leadership Role)



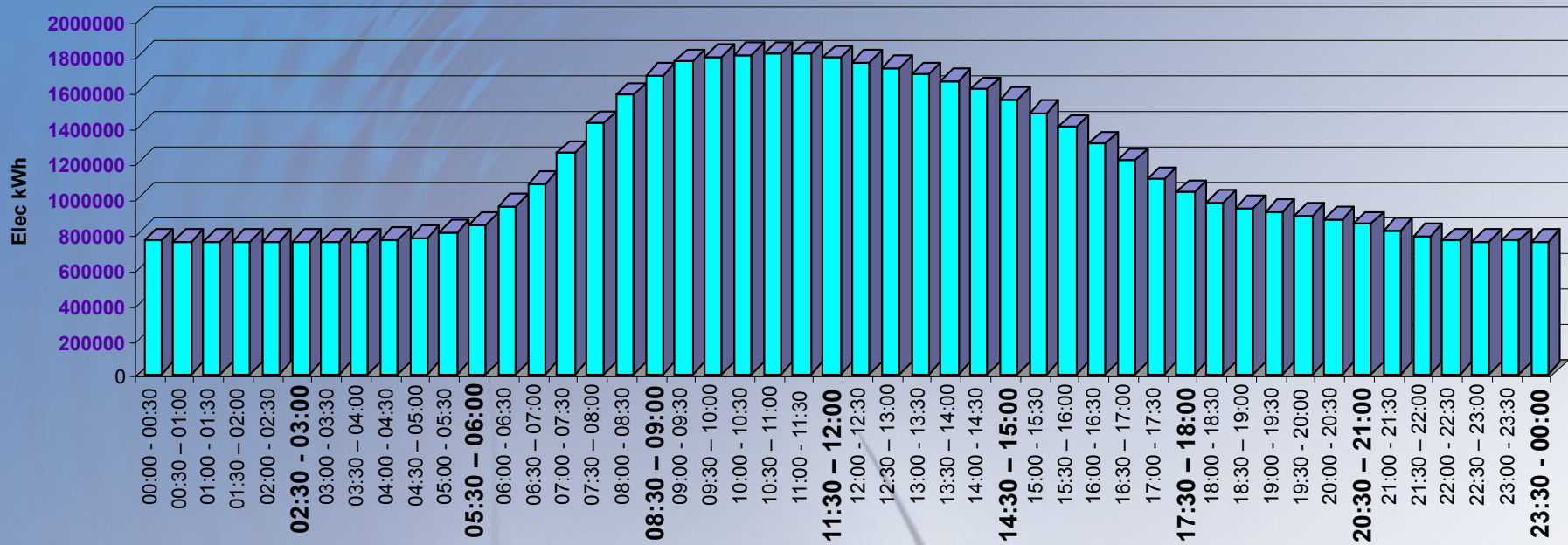
Planning Related Interventions

- **embedded NI188 up to a high level within services; future based around three areas**
- **Embedding the work firmly into the work of the existing emergency planning services and internal business continuity/ business risk processes**
- **Key plank of Estates Strategy**
- **Developed Green Infrastructure strategy with partners**
- **Continuing to better understand the actual local experiences and local microclimate.**
- **Embedding in strategic plans and policies – LDF**
- **prepared guide for developers for consultation as part of LDF to include mitigation and adaptation**
- **lead planning member attended the Manchester 2 day CLASP training for members**
- **supported training for planners and building control personnel**
- **Developing close work with EA on major schemes**



Quality Energy Management

24hr Total Units per Period





The City of Liverpool




let's get ready liverpool


Steps to take in case of emergency

City of Liverpool

Climate Change Strategic Framework: A Prospectus for Action

September 2009



Listen to local radio and check teletext for all travel disruption advice and news.

takenote

Planning for Emergencies

Liverpool City Council works closely with the emergency services - and other partner agencies such as the Environment Agency - in the development and delivery of local emergency plans.

Under the Civil Contingencies Act 2004, the principal mechanism for multi-agency co-operation is known as the Merseyside Resilience Forum. It is based on the Merseyside Resilience Forum, which brings together all organisations with specific duties under the Act, along with other agencies who would be involved in the response to an emergency.

The function of the LRF is to ensure that there is an appropriate level of preparedness to enable an effective response to an emergency. In order to determine what the highest risks of an emergency are, the Merseyside Resilience Forum has carried out a local area risk assessment.

14



Severe Weather

History has shown us that the weather in the UK can be just as severe and destructive as anywhere else in the world. Over the last twenty five years alone, we've experienced hurricanes, heat waves and snow storms which have tragically resulted in many deaths and caused billions of pounds worth of damage, billions lost to the economy. But we can prepare for such events and by doing some simple things you and your family will be better placed to recover when the weather improves.

Storms, Snow and Ice

Objects such as ladders, garden furniture etc being blown into windows

Always fasten doors and windows

Remove parked vehicles clear of buildings, trees, fences

Remove snow and ice as much as possible

During heavy snow, try not to walk or shelter close to trees

Check for damage to trees and fences

Check for damage to repair damage while the storm is over

Be careful when driving unless your journey is really necessary

Do not touch any electrical cables that have fallen down

Check for damage to any vulnerable neighbours or relatives

Check for damage to your own property but if you have to make a journey when it is necessary, make sure you have warm clothes, boots, a torch and spade





LOW-emissions

LOW-emissions

LOW-emissions
Vehicle

LOW-emissions
Vehicle

WX10
BF7

WX10
JRV

Liverpool
City Council

LOW-emissions
Vehicle

0151 233 3001
liverpool.gov.uk

Mainstreaming Politically Wider Leadership Agenda

- Clear link to Public and Partnership Concerns – Jobs, Housing, Skills, Efficiency (services and finances)
- Wider Economic Regeneration
- Work with partners



Liverpool Low Carbon Economy Agenda

Investment & Jobs

- Smart Grid projects
- Renewable energy projects
- Green investment bank
- Offshore/onshore wind
- Mersey tidal power
- Supply chain activities
- Sector inward investment

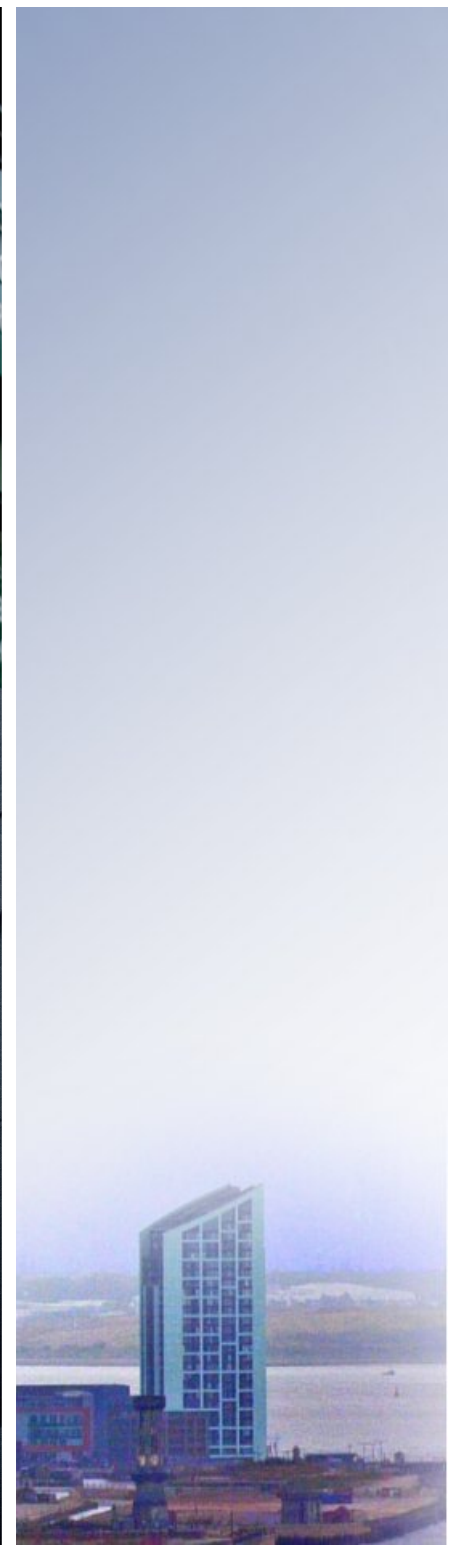
Housing & Skills

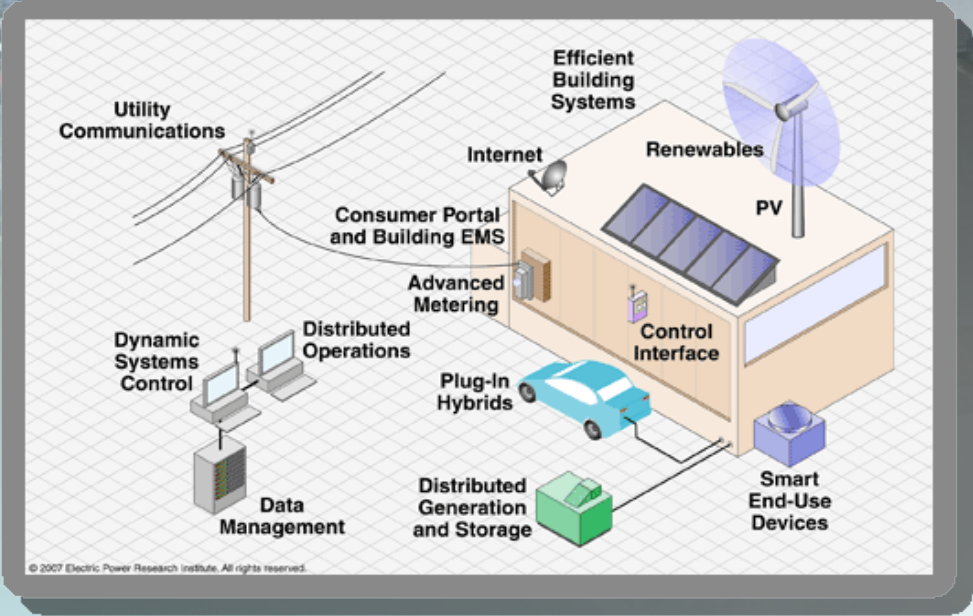
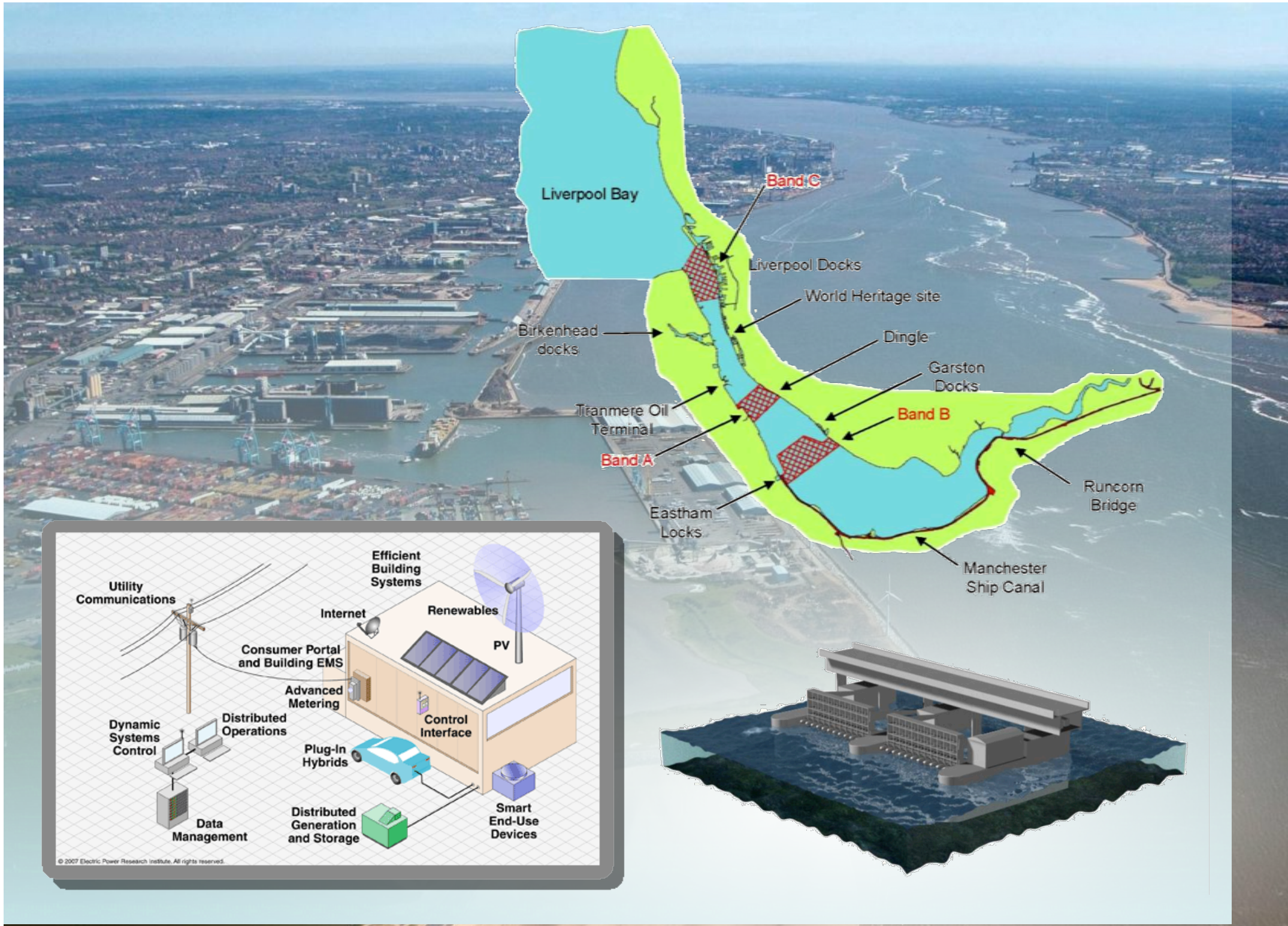
- LCR National Skills Hub
- Apprenticeship programme
- RSL retrofit (Housing company)

Developers & Commercial Operators

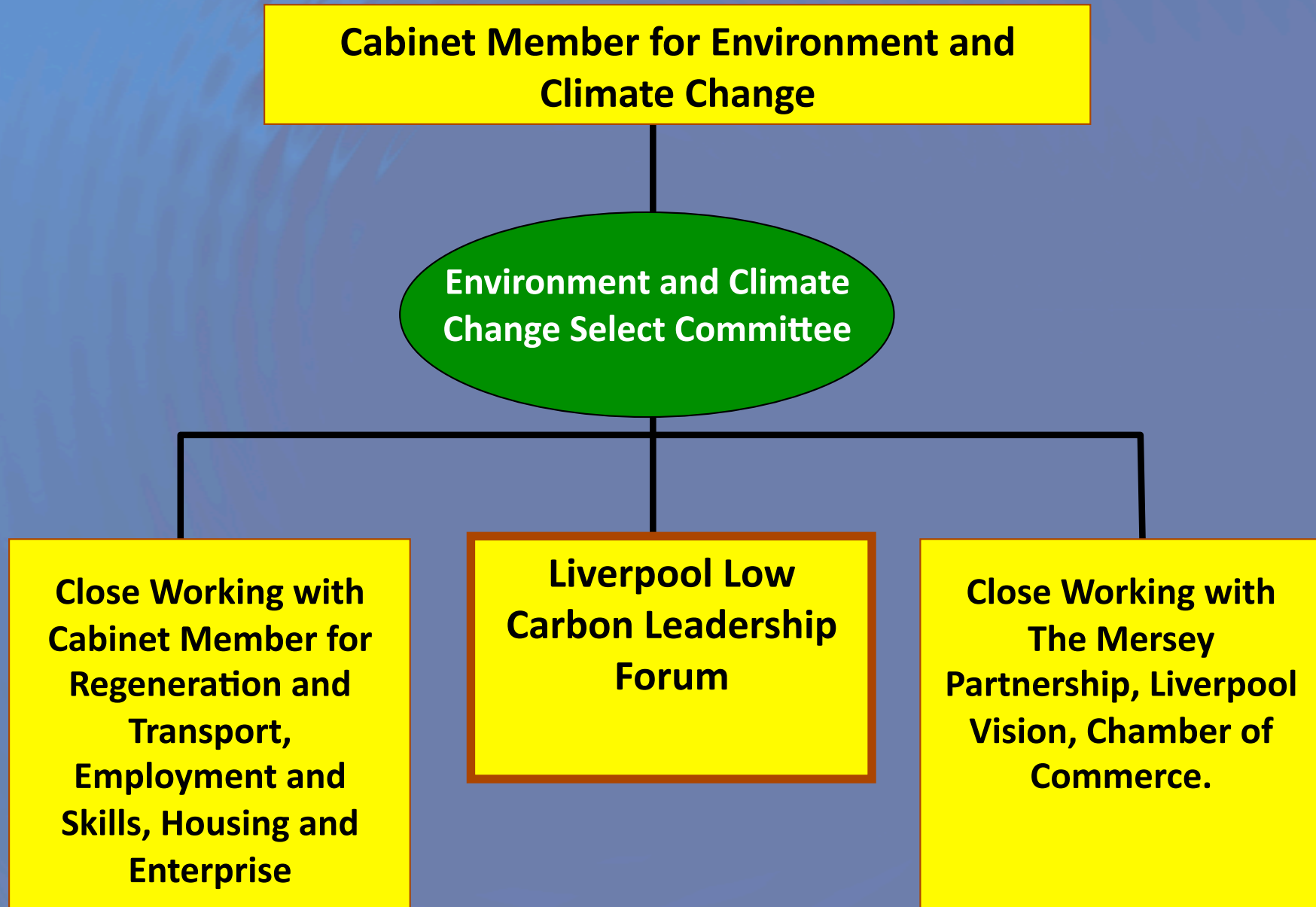
- Design guidance
- Financial investment
- Business guidance
 - reducing energy costs
 - increasing resilience
- Energy masterplanning







Elected Member Involvement and Governance Approach



Evidence of Success

- NW Climate Change Leaders Awards
- Sustainable Cities Index (12th to 4th)
- Carbon Reduction Commitment Founder Member
- Carbon Trust Standard Accreditation - 'exceptional'
- 5% CO2 reduction across whole estate
- Adaptation Level 3
- Embedded in Council documents
- £1.75m estimated annual savings
- 2011 Finalist LGC Low Carbon Council



Reasons for Success

- Leadership – Cabinet, City, and Officer
- Ambition partnered with mainstreaming agenda
- Clear mechanisms for internal working
- Training (elected Members and staff)
- Wider Cabinet and Member support
- Demonstrating the wider opportunity – LEP Agenda?



Future Priorities

- Positive staff messages and feedback
- Improve new build standards through LDF
- using this agenda to redefine City's image
- Low Carbon City Leadership Group
- Harness the Low Carbon Economy – major projects; Green Investment Bank, Liverpool Embassy, Peel Energy, Offshore Wind, Smartgrid
- City Council turbine?

